

SKETCH PLAN

PROPOSED CONSOLIDATION AND SUBDIVISION OF ERVEN
IN THE TOWNSHIP KLERKSDORP EXTENSION 38

PROVINCE : NORTH WEST
SCALE 1 : 5000



1.) SUBDIVISION OF ERF 2181:

AREAS		AREAS	
Portion of Erf 2181	Approx. Sq.metres	Portion of Erf 2181	Approx. Sq.metres
1	8297	18	3950
2	7921	19	3444
3	7957	20	3308
4	6591	21	3394
5	6402	22	2556
6	6597	23	2547
7	1,1784 hectare	24	1,7224 hectare
8	2501	25	1,7267 hectare
9	2556	26	1,7578 hectare
10	3394	27	1,6182 hectare
11	3308	28	1,5671 hectare
12	3444	29(S(Street))	2,7151 hectare
13	3950		
14	3912		
15	3916		
16	3910		
17	3912		

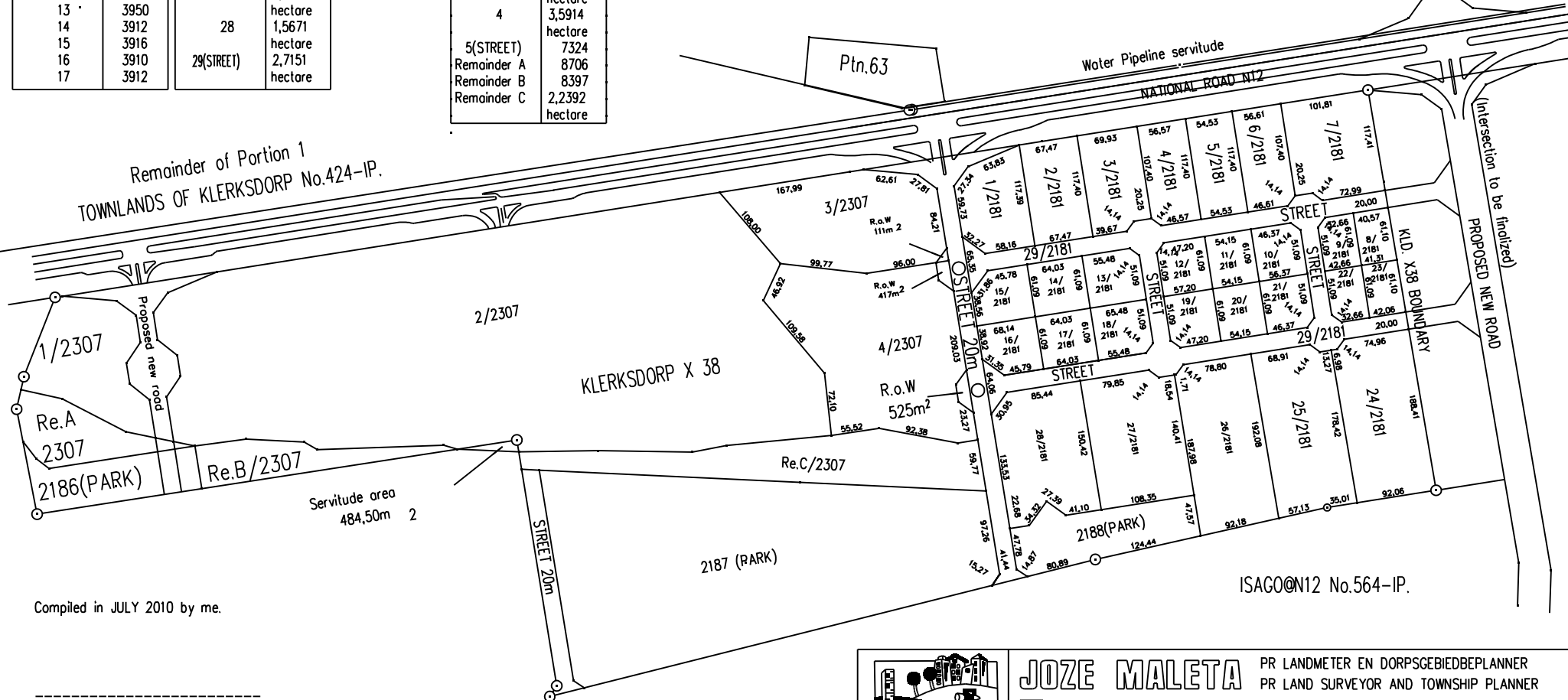
2.) CONSOLIDATION:

Erven 2182 to 2185 and a Portion of street will be consolidated.

3.) SUBDIVISION:

Shown is the proposed subdivision of consolidated Erf 2307.

AREAS	
Portion of Erf 2307	Approx. Sq.metres
1	1,5423 hectare
2	17,6630 hectare
3	2,3165 hectare
4	3,5914 hectare
5(STREET)	7324
Remainder A	8706
Remainder B	8397
Remainder C	2,2392 hectare



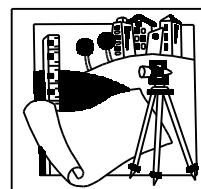
Remainder of Portion 1
TOWNLANDS OF KLERKSDORP No.424-IP.

1/2307
Re.A
2307
2186(PARK)
Re.B/2307

Servitude area
484,50m²

Compiled in JULY 2010 by me.

J. MALETA (PLSO368)
Professional Land surveyor



JOZE MALETA
PR LANDMETER EN DORPSGEBIEDBEPLANNER
PR LAND SURVEYOR AND TOWNSHIP PLANNER

1372 KLERKSDORP 2570
95 LEASKSTR. KLERKSDORP 2570
TEL : (018) 462-1991
FAXS : (018) 464-2509
E-POS : jmland@africa.com

W: \N12\KX38SP (L) (DG) WGS. - N12