

SKETCH PLAN
 PROPOSED CONSOLIDATION AND SUBDIVISION OF ERVEN
 IN THE TOWNSHIP
 KLERKSDORP EXTENSION 38

PROVINCE : NORTH WEST
 SCALE 1 : 7 500

Compiled in JULY 2009 by me

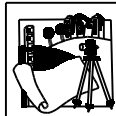
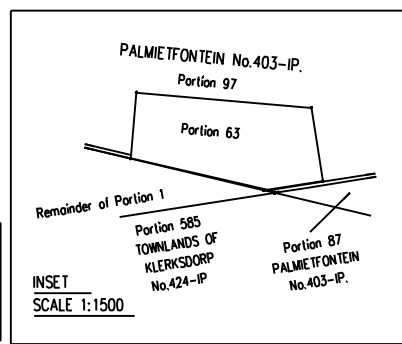
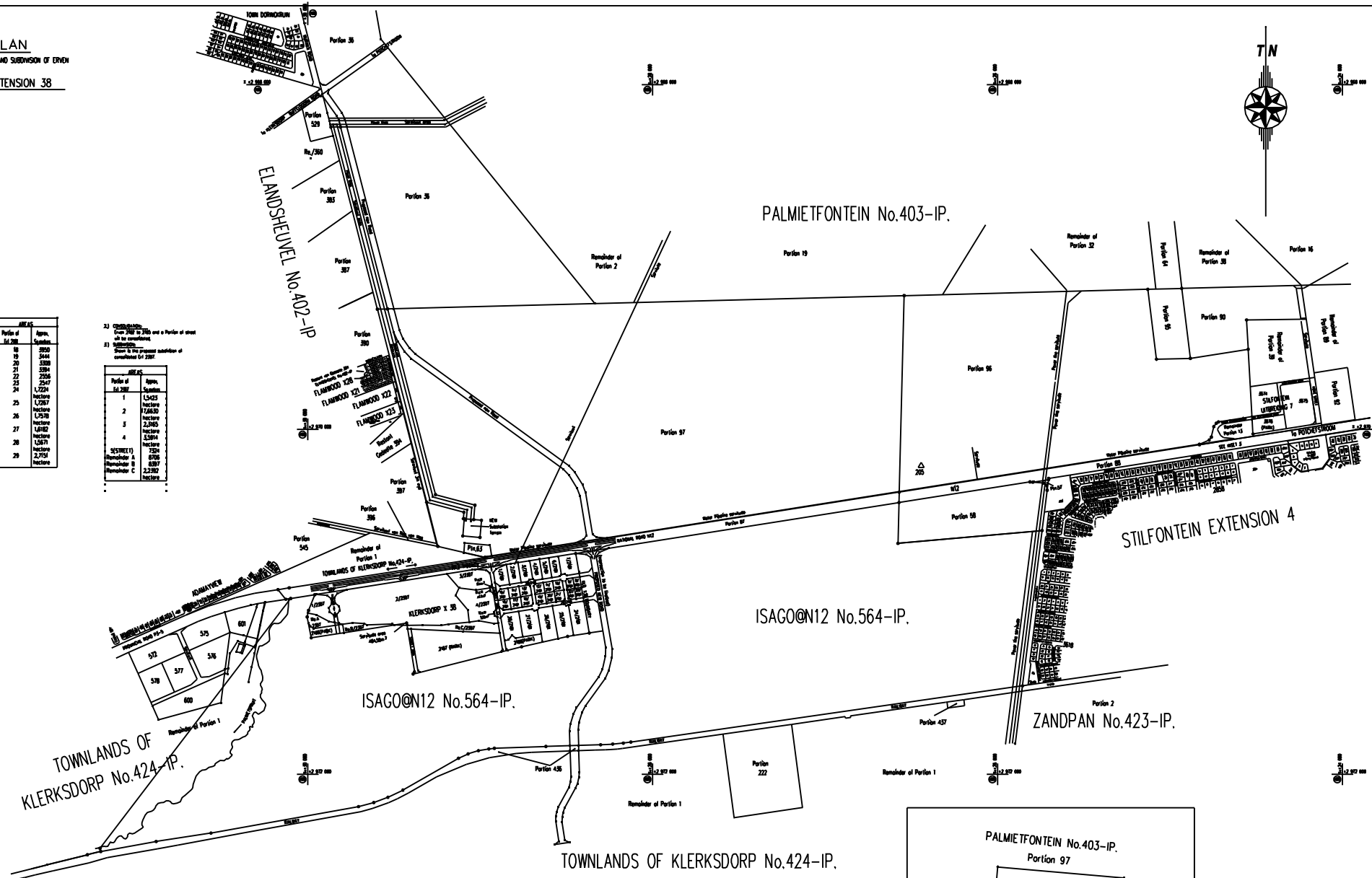
JOZETA (PL5090)
 Published Land Surveyor

1.1. Subdivision of Erf 297

ERF 297		ERF 297	
Portion of Erf 297	Approx. Surface Area	Portion of Erf 297	Approx. Surface Area
1	1297	18	990
2	787	19	5444
3	787	20	1380
4	6281	21	3384
5	6402	22	2529
6	1537	23	2547
7	1,178	24	1,724
	hectares		hectares
8	2907	25	1,787
9	2536	26	1,750
10	3394	26	1,750
11	3308	26	hectares
12	3344	27	1,812
13	3344	28	hectares
14	3302	28	1,817
15	3396	28	hectares
16	3302	29	2,751
17	3302	29	hectares

- 2) Consolidation of Erf 297 to 297 and a Portion of street as no consolidation
 3) Subdivision of Erf 297 into the proposed subdivision of consolidation Erf 297

ERF 297	
Portion of Erf 297	Approx. Surface Area
1	1,3425
2	7,2630
3	2,2985
4	3,3884
	hectares
SEWICE I	7234
Remainder A	8769
Remainder B	2,2382
Remainder C	hectares



JOZE MALETA
 PR LANDMETIER EN DORPSGEDEBEPLANNER
 PR LAND SURVEYOR AND TOWNSHIP PLANNER
 1372 95 LEASKSTR. TEL : (018) 462-1991
 KLERKSDORP KLERKSDORP FAKS : (018) 464-2509
 2570 FAKS : (018) 464-2509
 E-POS : jmaled@alfrica.com

W/M12/M1214 WOS - N12

W/M - 21/01/2010/150/702/000
 402 - 012